

### Description

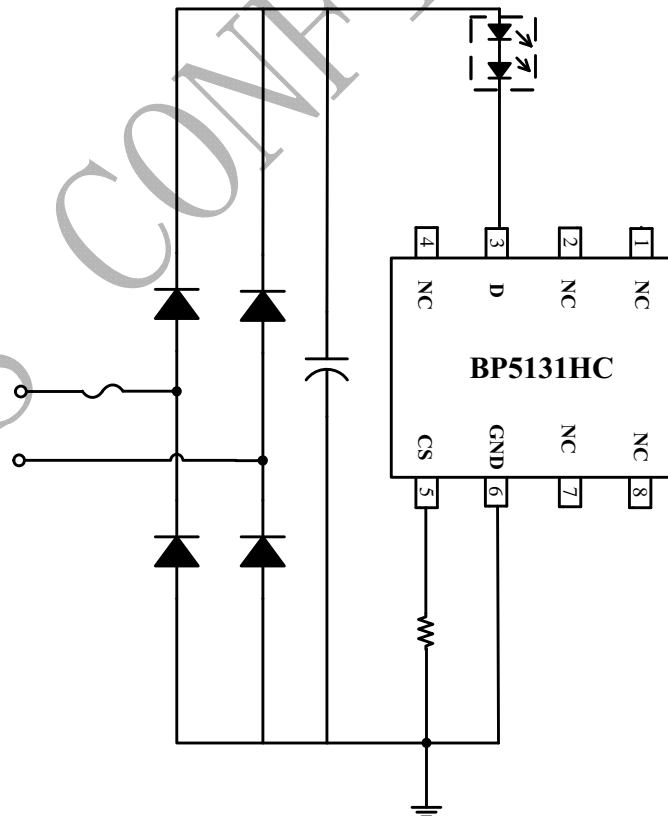
### Features

- ◆ ,
- ◆
- ◆
- ◆
- ◆
- ◆
- ◆

### Application

- ◆
- ◆
- ◆

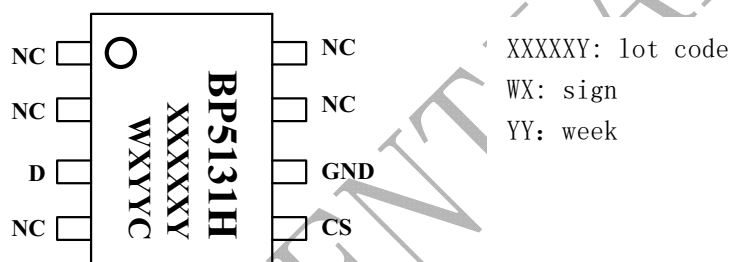
### Typical Application



### Order Information

Part Number	Package	Temperature	Packing Method	Mark
		℃      ℃		

### Pin mapping



### Pin Descriptions

Pin No.	Pin Name	Descriptions

BPS C